

# Cable-rod disconnectors

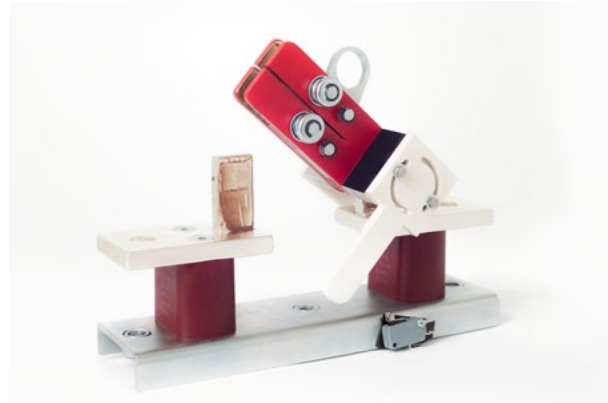
## OKT

### APPLICATION

Single-pole cable-rod disconnectors are devices used to connect and disconnect electric circuits without load and return cables in negative cells in traction substations and in industry. The OKT two-pole disconnector enables electrical or manual connection of both poles.

### ADVANTAGES

- » simple, reliable construction
- » small dimensions
- » silver-plated contacts with Cu / Ag antimony 10 um bc
- » possibility to attach auxiliary contacts on closing and opening
- » high rated short-circuit withstand



### TECHNICAL DATA

Outdoor thermal current	1250 A and 1600 A
Rated voltage	1,5 kV up to 3,6 kV
Rated insulation voltage	4800 VDC
Working temperature	- 5 up to + 40°C
Mechanical durability	20 000 cycles
Level of protection	IP00

### AUXILIARY CONTACTS

If necessary, it is possible to install auxiliary contacts. They are fastened one pair on the disconnector base and one on the closure and one on the NO / NC opening. In addition to the isolating clearance, they confirm with a limit switch signal.

- » Number of contacts in a unipolar device: 1NO + 1 NC
- » Number of contacts in a two-pole device: 3NO + 3NC
- » Rated operating voltage: 24-230V DC
- » Rated current: 0,27 A
- » Minimum current flow at 24 VDC: 1 mA

## CONSTRUCTION

Single-pole disconnecter type OKT consists of a steel galvanized base on which epoxy resin insulators for the voltage of 1,8 or 3,6 kV are attached. Fixed, silver-plated contacts are screwed to the insulators, and the movable contact is pulled off by means of an insulating pole, which is a isolating clearance in the air after opening.

The apparatus should be mounted in such a way that the movable contact opens downwards and in no way can it fall by gravity - uncontrollably onto the fixed contacts, causing the circuit to close. In the OKT type bipolar disconnecter, the moving contacts are coupled with the shaft and they can be opened manually or with the use of a drive mounted on the disconnecter's frame.

## MARKING

TYPE	DISCONNECTOR	OKT - MARKING
Voltage	1500 VDC	18
	3600 VDC	36
Thermal current in open air	1250 A	12
	1600 A	16
Number of poles	1	1
	2	2
Drive	motor	M
	manual	H
Drive's voltage	manual	0
	24 VDC	1
	220 VDC	2
	230 VAC	3
Number of auxiliary contacts	without	0
	1 NO + 1 NC	3
	3 NO + 3 NC	6

Name of the disconnecter	OKT	-	.	-	.	-	.	-	-	.	-
Rated voltage	-	15	.	-	.	-	.	-	-	.	-
Contractual current	-	-	.	12	.	-	.	-	-	.	-
Number of poles	-	-	.	-	.	1	.	-	-	.	-
Drive	-	-	.	-	.	-	.	H	-	.	-
Drive voltage	-	-	.	-	.	-	.	-	0	.	-
Number of auxiliary contacts	-	-	.	-	.	-	.	-	-	.	0
Proper marking	OKT	15	.	12	.	1	.	H	0	.	0

### Example of marking

## ORDER EXAMPLE

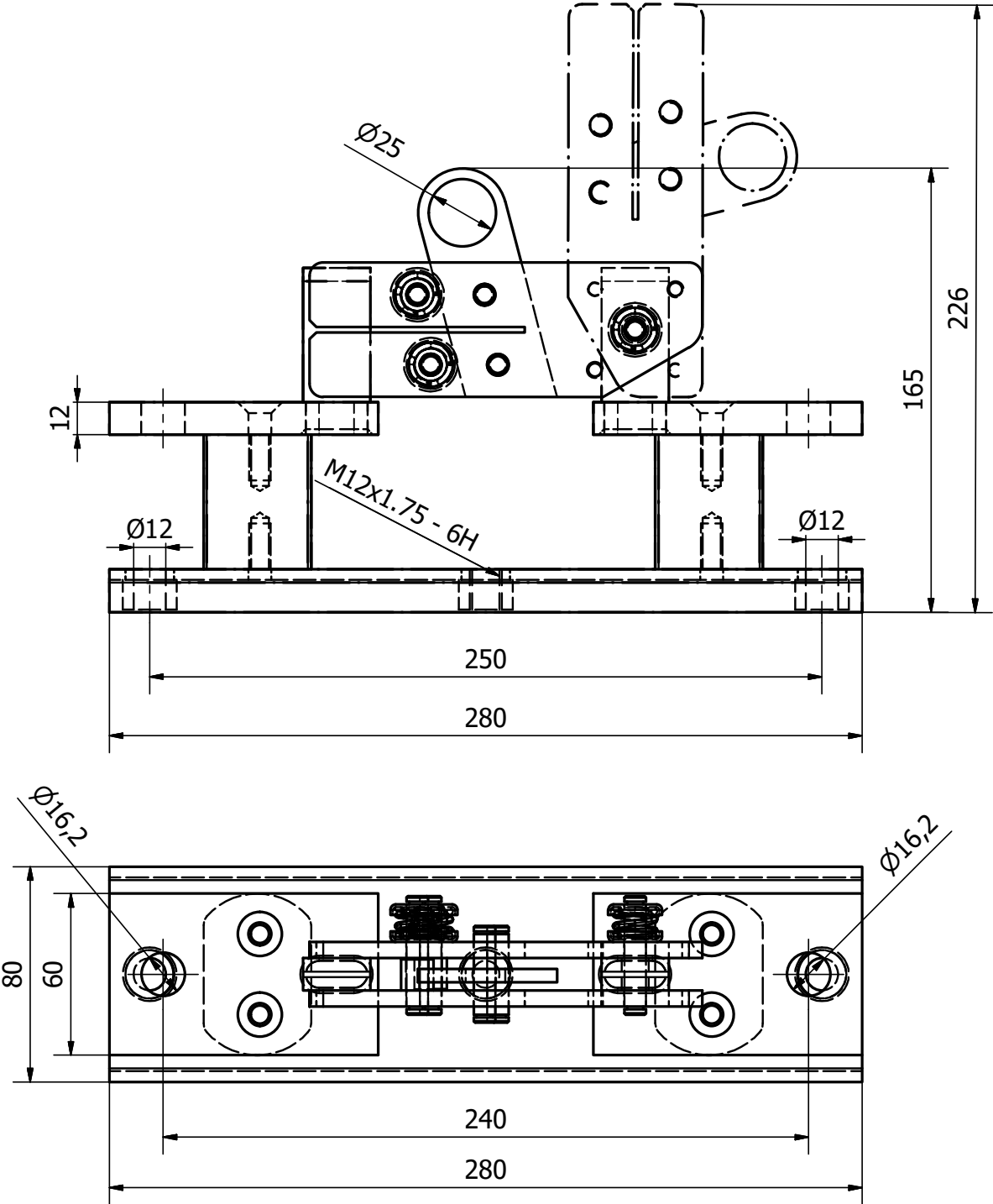
### Indoor disconnecter OKT 15.12.1.H.0.0

Cable-pole disconnecter for rated voltage max. 1500 VDC, rated current max. 1250 A, single-pole, pole-opened, without signal limit switches.

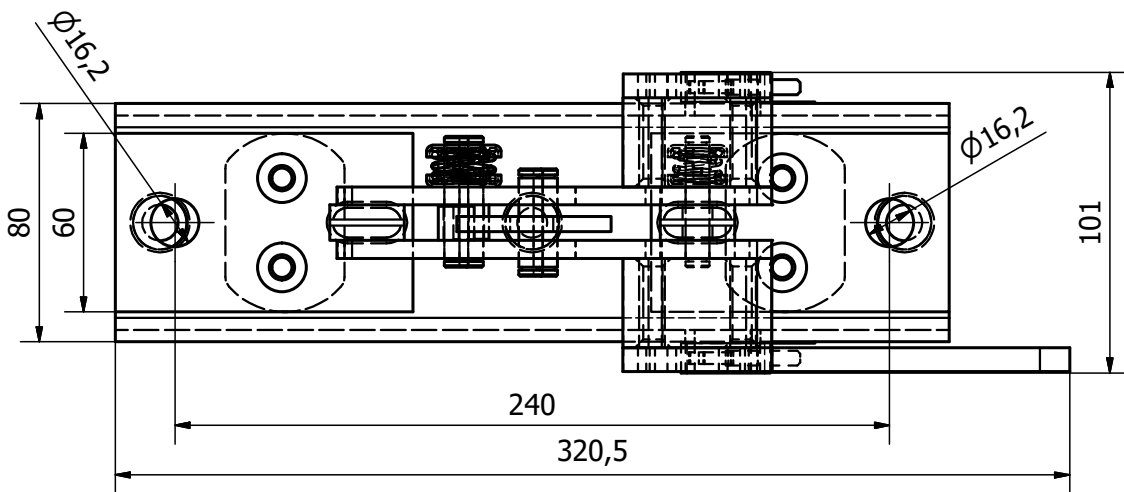
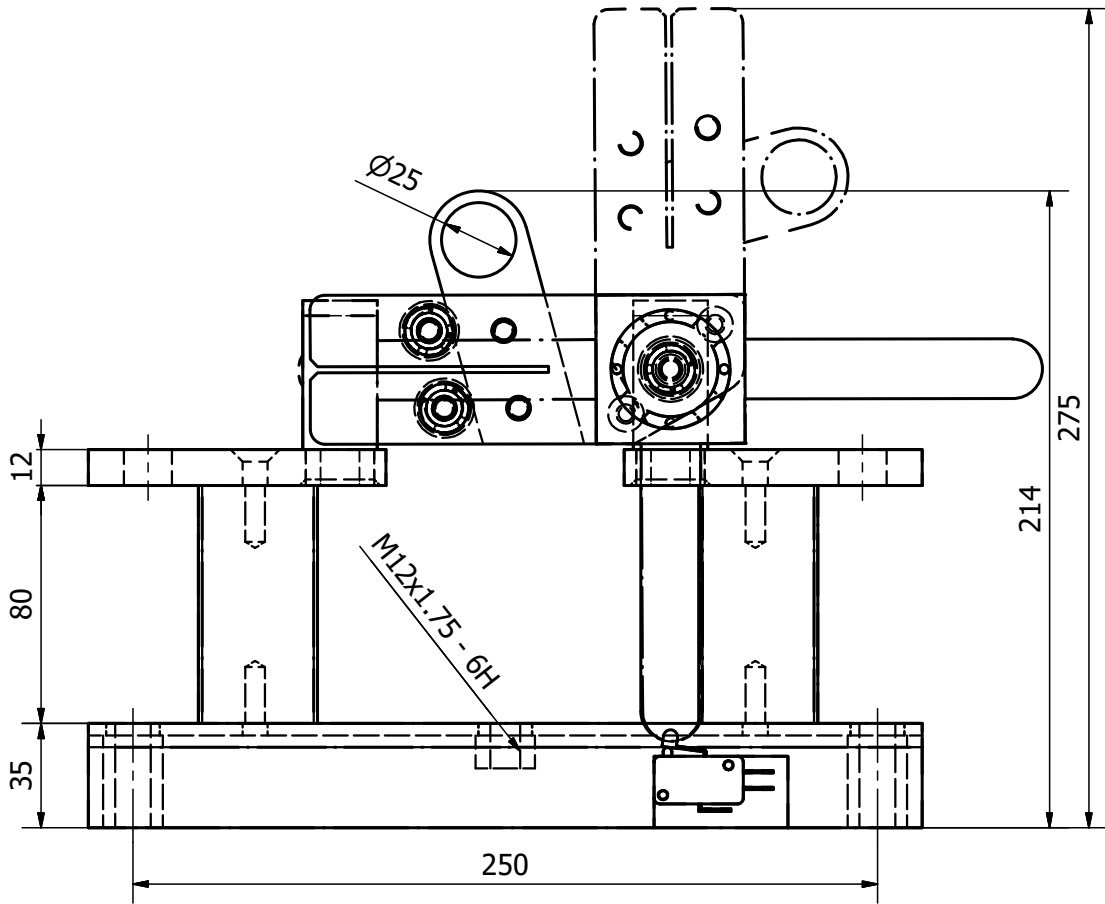
### Indoor disconnecter OKT 36.16.2.M.2.3

Cable disconnecter for max voltage 3600 V DC, rated current max 1600 A, two-pole with a motor drive, voltage 220 VDC and auxiliary switches 3NO + 3NC

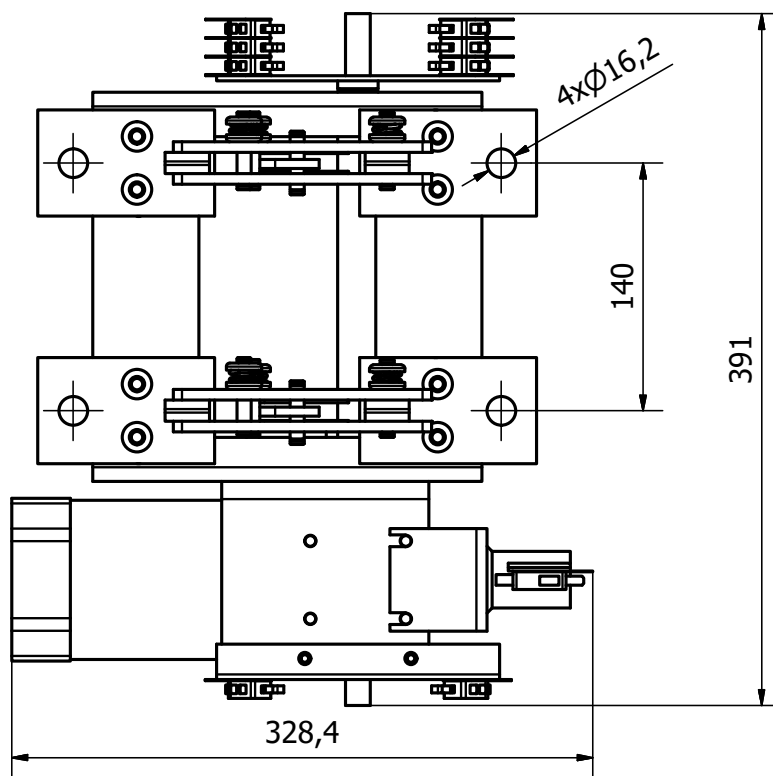
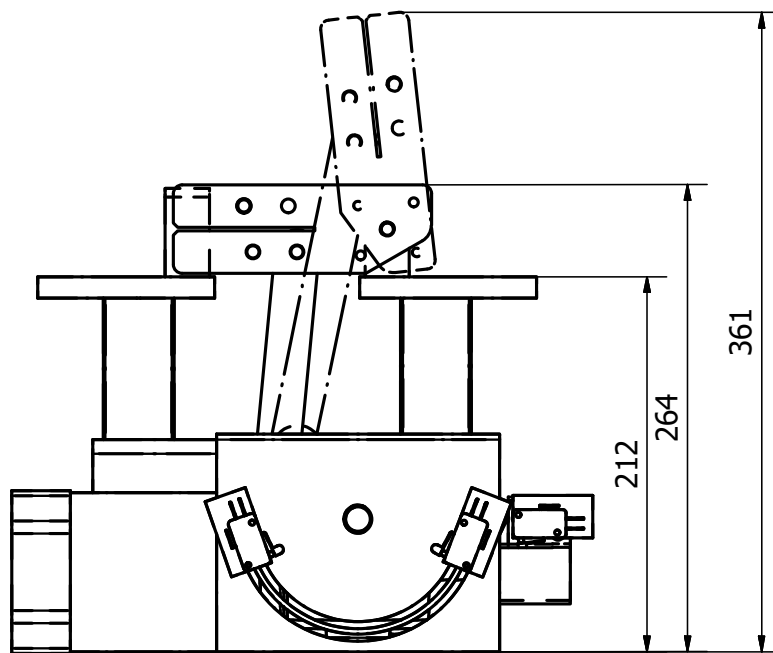
Note: For technical reasons, some options and configurations cannot be combined in the designation code.



Dimensions of OKT 15.12.1.H.0.0 disconnecter



Dimensions of OKT 36.12.1.H.0.1 disconnecter



Dimensions of OKT 36.12.2.M.2.3 disconnector