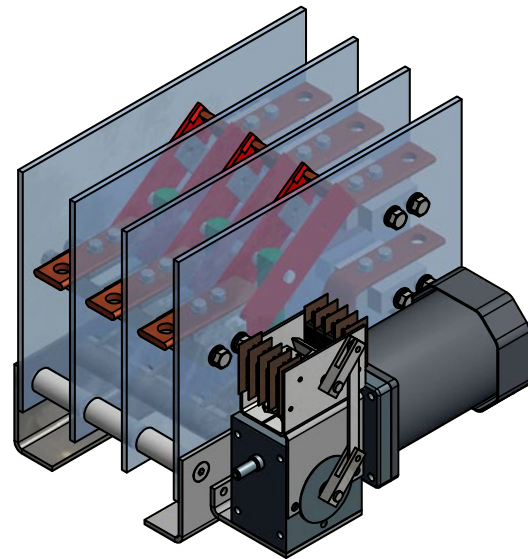


# Indoor switch with motor drive

## PWNS 2/6

### APPLICATION

The switch is designed for switching electrical circuits without the load. It is a three-pole device used in medium voltage switchgears for switching on, switching or grounding electrical circuits. Switching operations are performed by a motor drive mounted on the device. Device's positioning is done by auxiliary contacts (at least 2NO + 2NC).

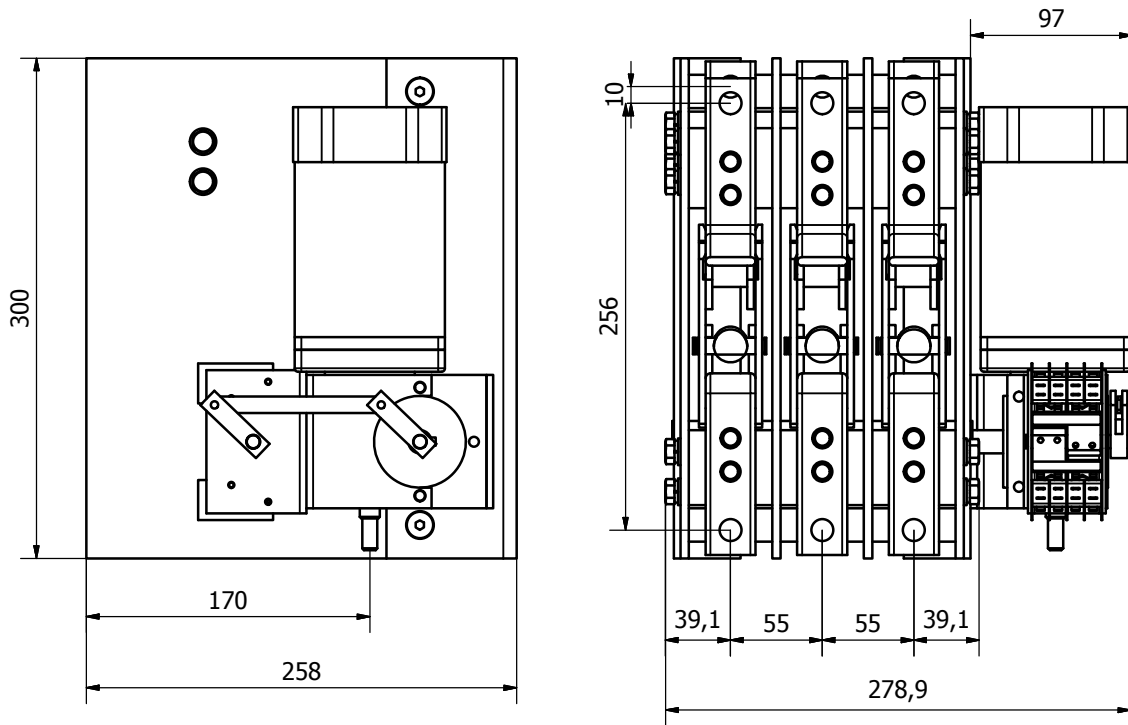


### ADVANTAGES

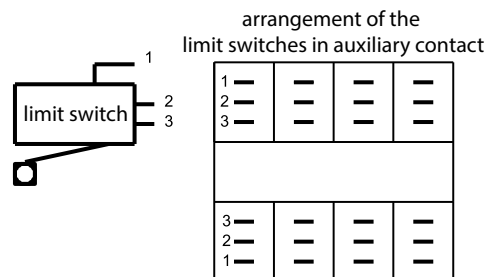
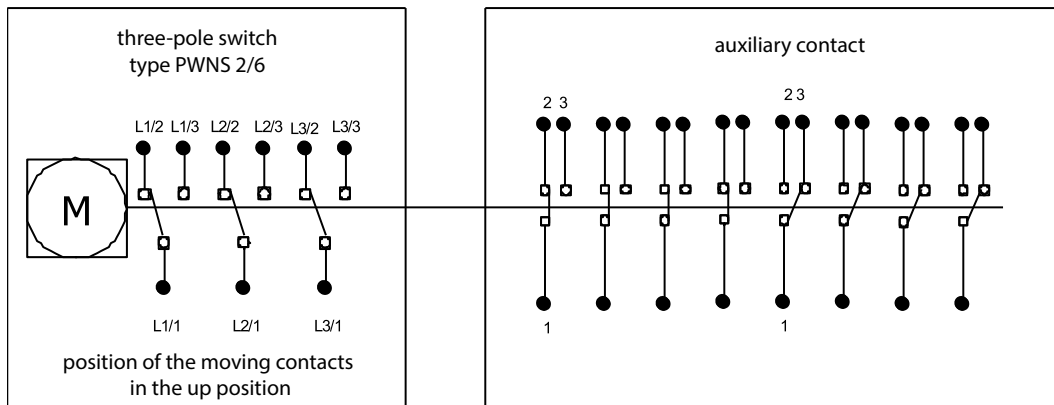
- » high short-circuit current
- » contacts covered with silver
- » high strength
- » small dimensions

### TECHNICAL DATA

PARAMETER	VALUE
Rated current	630 A
Switching durability	2000 cycles
Rated voltage	2 kV
Short-circuit current	25 kA
Time of short-circuit	1 s.
Max peak interpolar voltage	2 kV
Voltage of basic insulation	3 kV
Voltage of motor control	24 VDC
Auxiliary contacts	2NO + 2NC
Weight	15 kg



Dimensions of PWNS



Circuit arrangement and marking