

Motor drive 110 kV

NSO 110 / NSO 110 MH / NSO 110 MM

APPLICATION

Motor drives type NSO 110 are designed to close and open disconnectors with high voltage outdoor disconnectors and earthing switches with a rotation angle to be adjusted of 192° and the closing and opening resistance moment is over 800 Nm. The drives are designed for use with disconnectors and earthing switches 72,5, 110 and 220 kV. These are the perfect replacement for manual or pneumatic drives.



ADVANTAGES

- » simple design
- » high torque for easy maneuvering of single- and three-pole disconnector assemblies in the most difficult climatic conditions
- » versatile electrical equipment with auxiliary and control equipment with signaling connector
- » anti corrosive protection of the casing due to the use of aluminum sheet and painting

OPERATING CONDITIONS

PARAMETER	VALUE
Temperature	from -40 up to +40°C
Air humidity	up to 100% at temperature of 20°C
Sea level altitude	up to 1000 m
Wind speed	up to 30 m/s

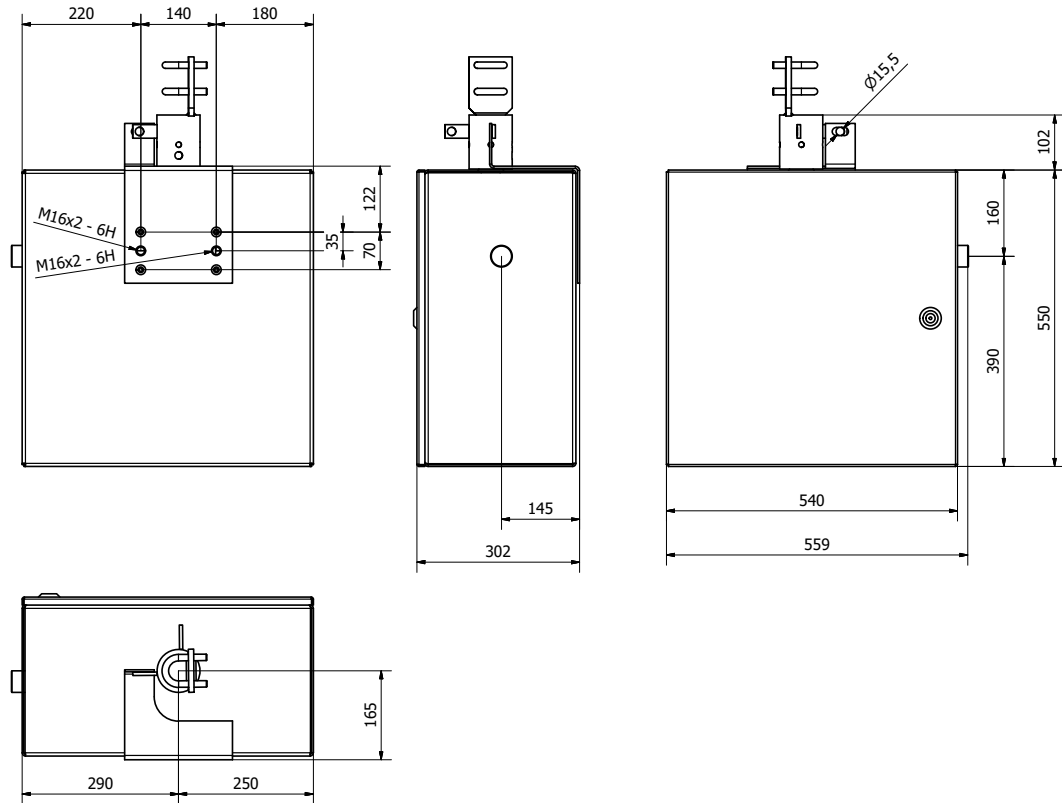
TECHNICAL DATA

PARAMETER	VALUE		
	NSO 110	NSO 110 MH P/L*	NSO 110 MM
Rated voltage/rated current:	» 230 VAC		
» squirrel-cage motor	» 3x400 VAC 1,9 A		
» DC motor	» 110 VDC /220 VDC		
Contacting coil for monitoring the motor supply voltage	400 VAC/ 220 VDC/ 110 VDC/ 24 VDC 230 VAC		
Radiator	230 VAC/ 220 VDC/ 110 VDC		
Contacting coil	230 VAC/ 220 VDC/ 110 VDC/ 24 VDC		
Electromagnetic lock	220 VAC/ 220 VDC/ 110 VDC/ 24 VDC		
Rated power:	» 700 W		
» squirrel-cage motor	» 700 W		
» DC motor on permanent magnets	» 800 W		
» contacting coil	» 7 W		
» radiator	» 25 W		
» blocking electromagnet coil	» 7 W		
Moment on the shaft:	» 400/550/950 Nm		
» rated	» 400/550/950 Nm		
» maximum	» 550/850/1550 Nm		
Adjustment time of the high voltage switch	15 s.	10 s.	
Number of rotations for manual manoeuvring	100	50	
Rotation angle of the main shaft	192°	90°	
Rated switching capacity of the auxiliary contact	» AC 230 V; 5 A		
	» DC 220 V; 0,25 A		
Protection class of the housing	IP 54		
Weight	51 kg	138 kg	149 kg
Rated mechanical durability	2000 cycles		

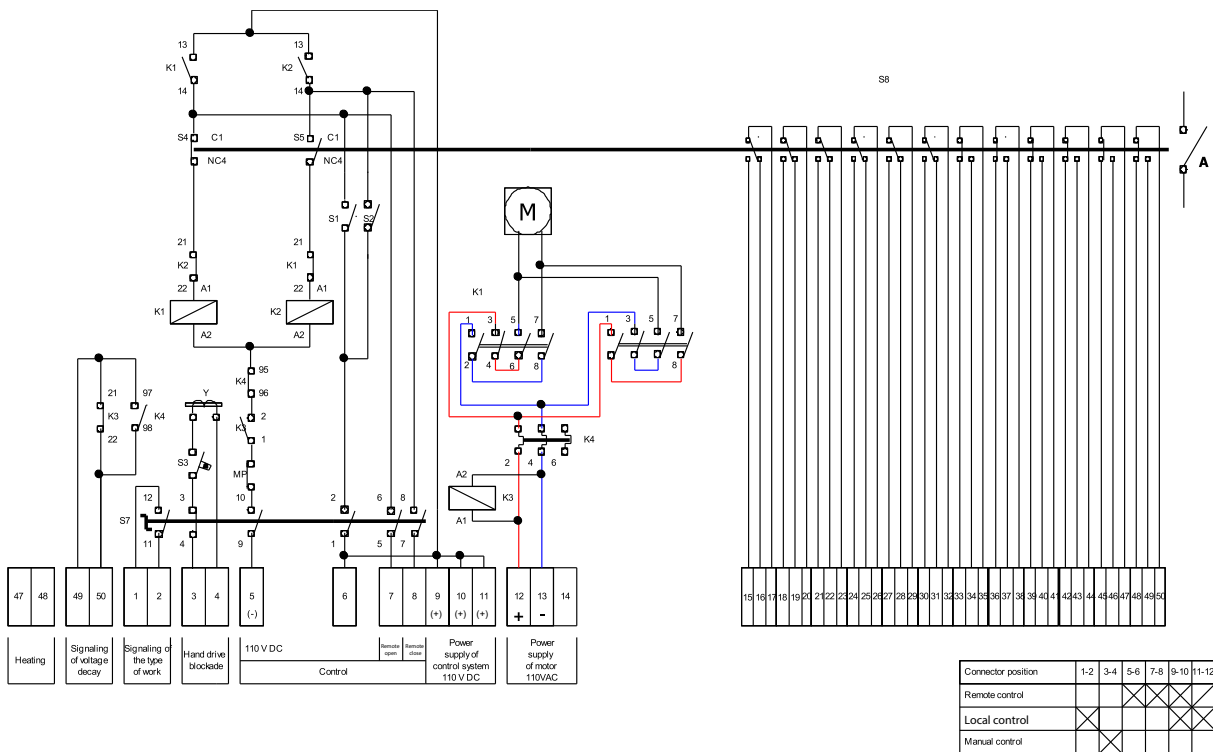
* The drive is equipped with two drive mechanisms - manual and motor, which can be mounted on the right or left side (P/L), depending on the needs.

TECHNICAL DRAWINGS

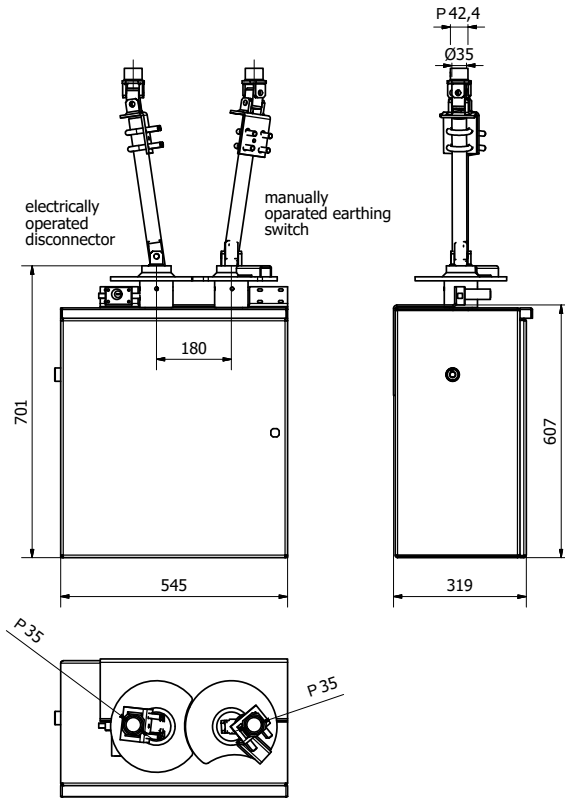
WIRING DIAGRAMS



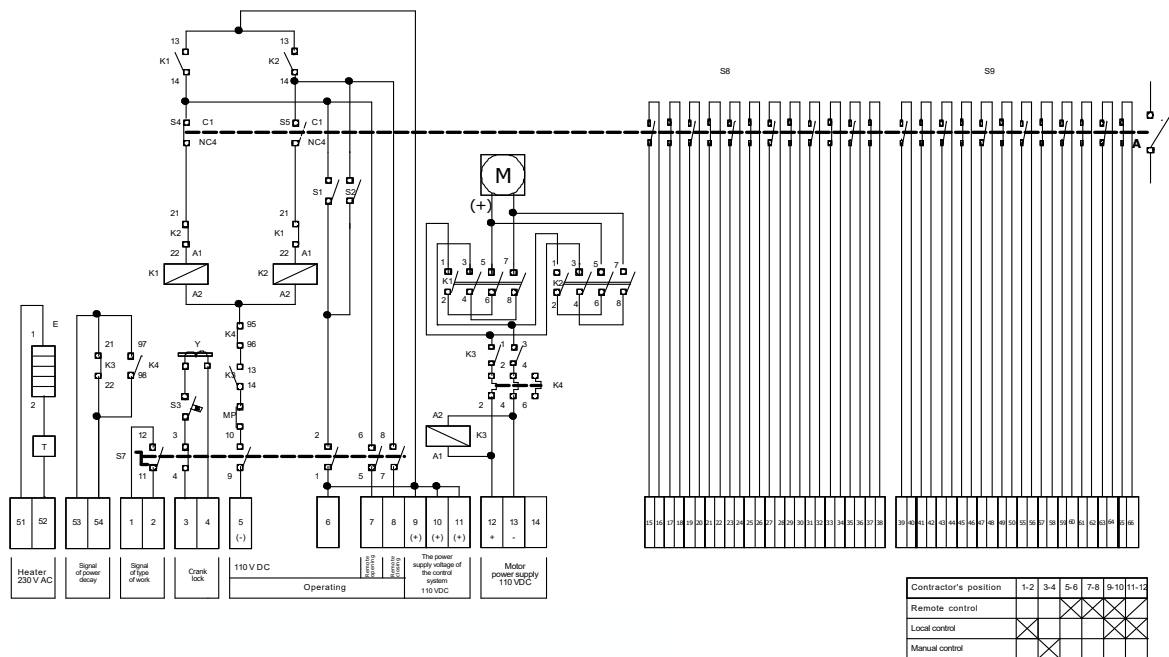
Dimensions of NSO 110



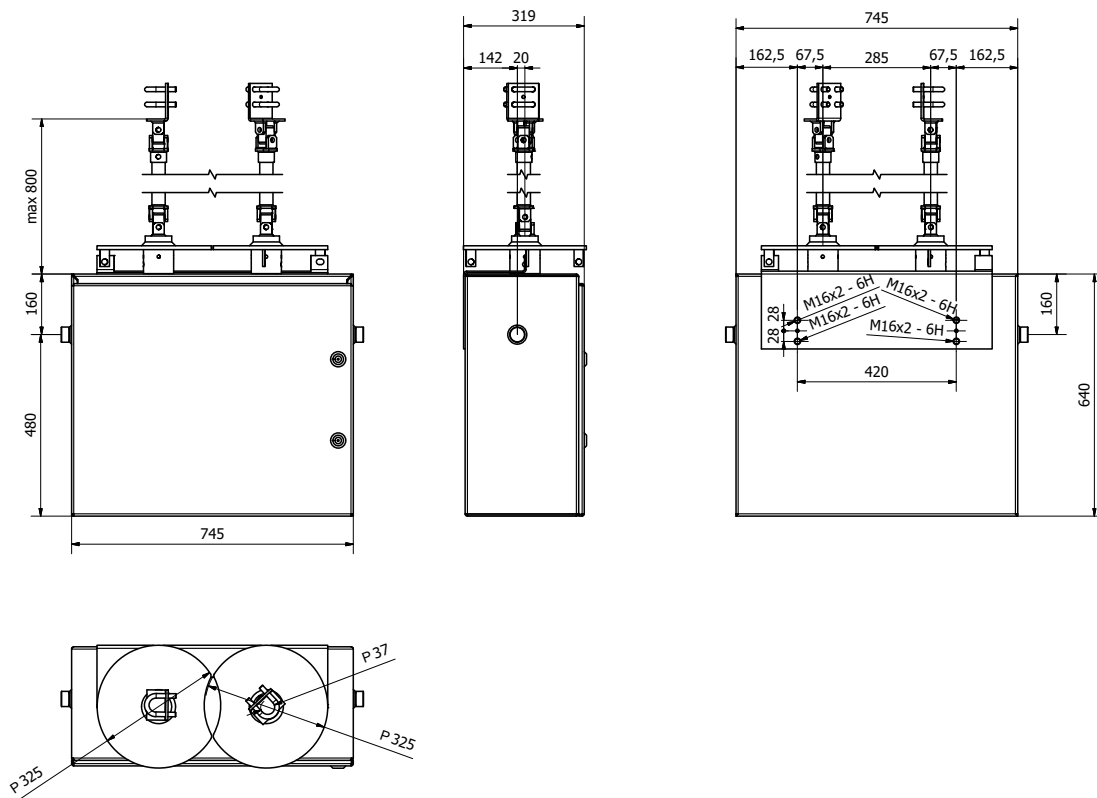
Wiring diagram of NSO 110



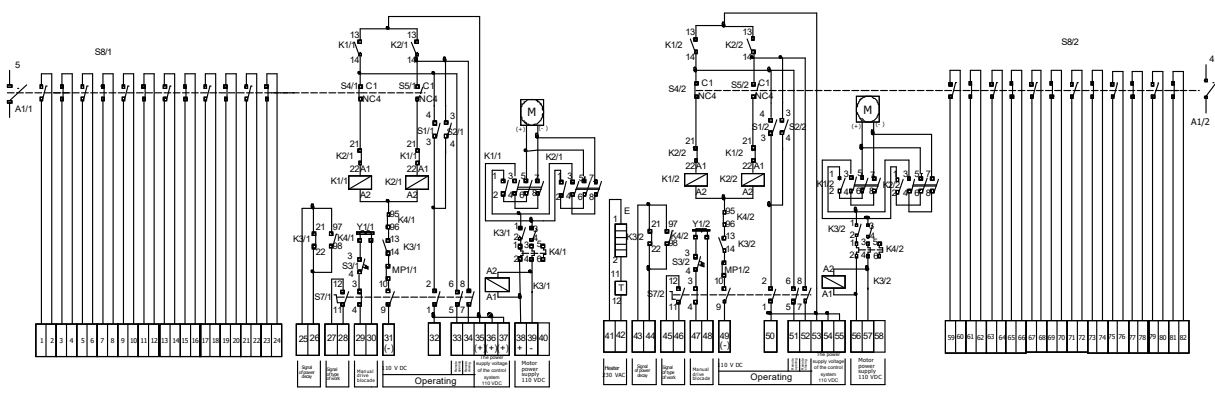
Dimensions of NSO 110 MH



Wiring diagram of NSO 110 MH



Dimensions of NSO 110 MM



Contractor's position	1-2	3-4	5-6	7-8	9-10	11-12
Remote control						
Local control						
Manual control						

Wiring diagram of NSO 110 MM